



POWER, REDEFINED

22,000 - 36,000 LB. CAPACITY
INTERNAL COMBUSTION
PNEUMATIC TIRE LIFT TRUCK

TRUE STRENGTH, COMES FROM THE INSIDE

Built With Your Business In Mind

The Cat® DP100N-DP160N pneumatic tire lift truck series provides optimum power and reliability to tackle the toughest material handling applications. Equipped with a high-performance Perkins™ 1204E 4.4L engine, this series offers increased fuel efficiency, reduced emissions and a lower overall operating cost.

ADVANTAGES TO YOU:

- 22,000 - 36,000 lb. lift capacities
- Controlled, yet powerful acceleration maximizes productivity.
- A 13% increase* in fuel efficiency means a better bottom line for your business.
- 500-hour extended service intervals for less maintenance and reduced downtime.
- Emission levels are well below Environmental Protection Agency (EPA) Tier 4 interim requirements.
- World-class service and support is provided by the best dealer network in the industry.

KEY APPLICATIONS:

- Lumber
- Steel and pipe
- Fabricated metals
- Concrete, stone, clay and glass
- Industrial machinery and equipment



Fuel-efficient Perkins diesel engine
EPA Tier 4 interim-compliant



Solid steel frame
More steel in the frame for added strength



Front to back visibility
Narrow mast channels with a large window of vision and a low profile counterweight promote good visibility while traveling



Durability and strength
One-piece steer axle reduces stress on the chassis and allows the lift truck to perform in rugged environments



* Fuel efficiency increase shown against previous model in preliminary testing. Levels may vary based on application.

Ready To Work

Equipped with a powerful four-cylinder engine, the Cat DP100N-DP160N series is ready to work when you are. Delivering powerful acceleration for maximum productivity, these lift trucks were built for real performance.

HIGH-PERFORMANCE ENGINE

This lift truck series features a Perkins 1204E 4.4L sequential, twin turbo, in-line four-cylinder engine, which draws from more than 80 years of diesel engine experience. Building only the best in industrial engines, Perkins has spent a vast amount of time and resources on engine development for increased productivity and lower overall operating costs. This engine is able to provide comparable productivity with a fraction of the fuel, and ultimately, a fraction of the operating cost.

Benefits:

- Performs with 13% more fuel efficiency than the previous model, resulting in greater annual savings*.
- Fuel saver mode lowers fuel consumption by up to 14%, while maintaining up to 95% of overall productivity.
- Low-speed torque offers controlled, yet powerful acceleration for maximum productivity.
- Twin turbochargers deliver rapid response and a better driving experience for your operators.
- Built to meet EPA Tier 4 interim standards.

REDUCED EMISSIONS

This lift truck features a Diesel Particulate Filter (DPF) designed to meet U.S. EPA Tier 4 interim standards. The DPF passively burns off soot in the system, helping to minimize harmful emission levels.

- **Increased uptime** – the soot in the DPF canister will burn off on its own when needed while the operator continues to work.
- **Maintenance free** – the emission control system does not require additives and undergoes passive regeneration, allowing for uninterrupted work and less downtime.
- **Serviceability** – trained service technicians at your local Cat lift truck dealer can provide specialized service and support on the entire truck, including the Perkins engine.



LONG-TERM POWER



QUALITY NEVER QUILTS

With top engine performance, this lift truck series is ready to take on the most rugged applications, delivering day after day, shift after shift – even into the night.

* Based on preliminary test results; levels may vary depending on application.

COMFORT OVER THE LONG HAUL



EXCEPTIONAL COMFORT

The full-suspension standard vinyl seat allows adjustment in numerous places to provide the operator with a comfortable ride.

- **Front and back adjustment** – slides up to 6.5 inches for operators of various heights
- **Suspension adjustment** – adds support in the seat based on the weight of the operator
- **Lumbar support adjustment** – supports the operator's lower back
- **Fold down pin** – allows the seat to easily move for access to the engine hood

The DP100N-DP160N series is equipped with essential features for optimum operator comfort and control. Premium ergonomics and a smooth, controlled ride come together to help your operators achieve maximum productivity – shift after shift.



MORE COMFORT

Minimizing noise and vibration levels will keep the operator as comfortable as possible with the goal of increasing efficiency while decreasing overall fatigue.

Less vibration and noise is achieved through the use of:

- Rubber mounted components
- Fully-insulated engine hood
- Helical transmission gears
- Closed wheel wells

MORE CONTROL

Fingertip controls are located in the armrest for easy operator access and control throughout the shift. This provides maximum control of the lift truck's hydraulic functions with minimal effort and helps reduce operator fatigue throughout the shift.

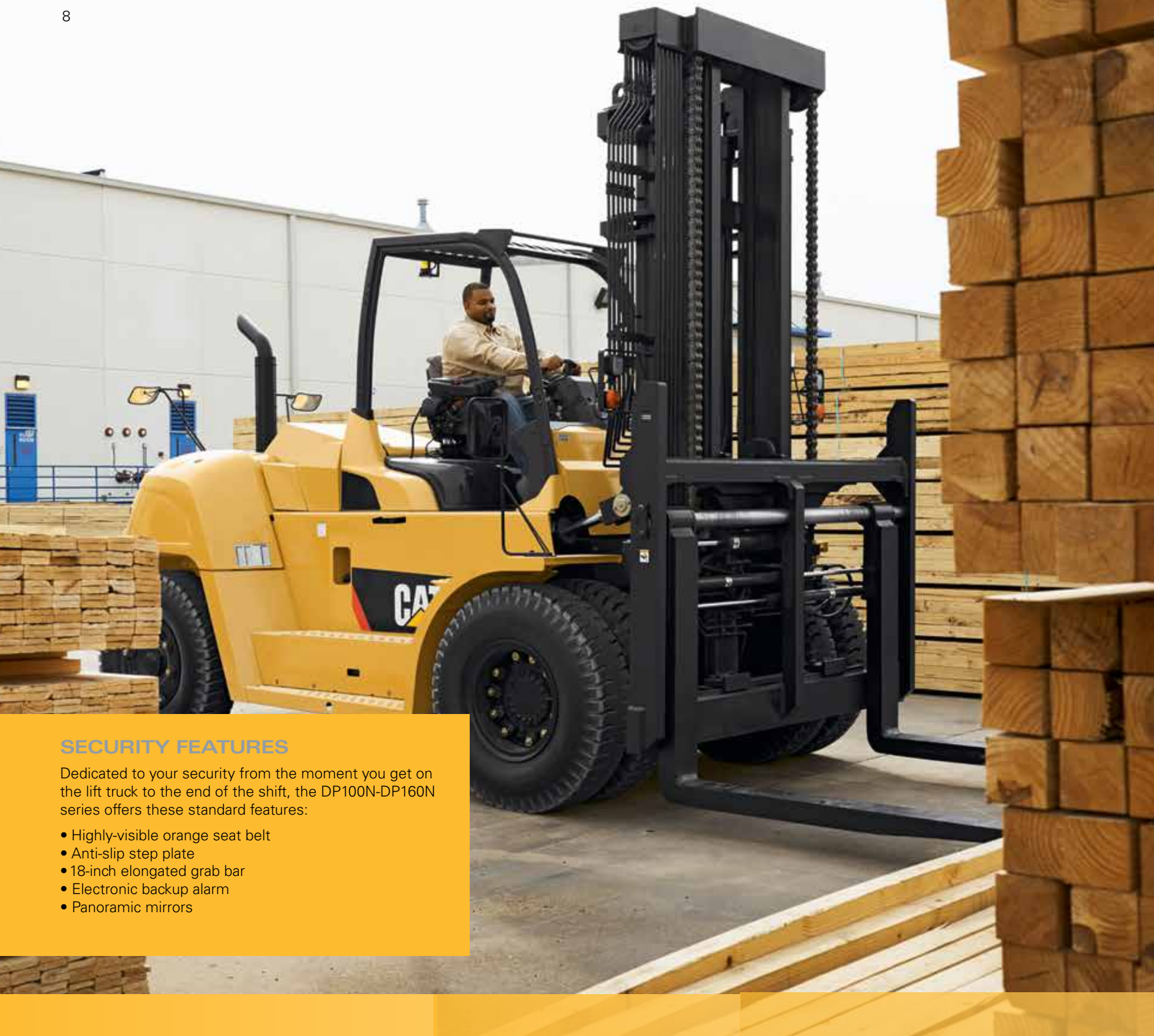
CAB OPTIONS

This lift truck can be equipped with four different cab options for added operator protection from the elements. Package options include windshields to side doors, depending on your specific application.

MORE FEATURES FOR YOUR OPERATOR

- **Hydrostatic steering** – minimizes the steering effort regardless of speed, providing better lift truck control and maneuverability.
- **Tilt steering column with mechanical quick return** – allows the operator to adjust and lock, returning the truck to its preset position.
- **Standard orange seat belt** – clearly see when operators are properly wearing their seat belt.
- **Electronic direction control** – allows the operator to easily shift between forward and reverse travel without losing contact with the steering wheel, resulting in smooth direction changes up to 2.5 mph.
- **Pneumatic tires** – provide traction and a comfortable ride in rugged environments. The standard dual drive tires offer added stability while handling loads up to 36,000 lbs.

*Optional cloth seat shown in photography.



SECURITY FEATURES

Dedicated to your security from the moment you get on the lift truck to the end of the shift, the DP100N-DP160N series offers these standard features:

- Highly-visible orange seat belt
- Anti-slip step plate
- 18-inch elongated grab bar
- Electronic backup alarm
- Panoramic mirrors

PRESENCE DETECTION SYSTEM (PDS)

The Presence Detection System (PDS) activates whenever the operator does not fasten the seat belt during operation or leaves the normal operating position without activating the parking brake. This integral computer-based feedback system uses both audible and visual indicators to alert the operator to potentially hazardous situations, while increasing operator awareness.

Key features:

- When the operator is not in the normal operating position, the PDS electronically discontinues powered-travel movement and activation of load-handling functions.
- When an operator is in the normal operating position, but the seat belt is not buckled, an audible warning will sound and a visible indicator will appear, alerting the operator.

TAKE CONTROL OF YOUR WORKDAY

Optimum Visibility, Maximum Efficiency

The Cat DP100N-DP160N series is equipped with essential indicators and features to help keep your operators alert and confident throughout the workday. Experience maximum productivity with this lineup of powerful tools.



Premium LCD/LED Display

The easy-to-read display with at-a-glance indicators helps to keep the operator aware of the truck's performance. Features like speed, travel direction and maintenance requirements are easily visible throughout operation.



Ground Speed Control

Software and sensors limit the maximum travel speed of the truck without limiting its performance. See your local Cat lift truck dealer for flexibility in adjusting the speed.



LED Lights

These work lights have a longer life, minimize glare and are cooler than traditional bulbs – all features that lower the cost of ownership while improving operator productivity.

Electronic Backup Alarm

The alarm sounds anytime the truck is in reverse, alerting pedestrians and other operators working nearby.



Panoramic Mirrors

These mirrors are counterweight-mounted, offering added visibility during operation.

Engine Protection System

This system is designed to keep the lift truck running at peak performance. Display-based indicators notify the operators when vital fluids are low or engine maintenance is required, resulting in greater uptime while helping to reduce the risk of more costly maintenance needs later down the line.



Local service and support



Genuine OEM parts



Custom financing packages



Factory warranty for added protection

MORE CONFIDENCE

Local Support You Can Count On

A Cat lift truck purchase connects you to a variety of material handling solutions, including world-class service and support from your local, trusted dealer. With trained service technicians, a diverse parts inventory and a broad selection of service options, your local dealer can help you lower costs, enhance productivity and more efficiently manage your business.

FINANCING MADE SIMPLE

Financing your next Cat lift truck is easy with our wide range of flexible leasing and purchasing options. Whether you want to finance or lease, your local Cat lift truck dealer can help customize a package for your business.

WHEN EVERY PART COUNTS

When buying from your local Cat lift truck dealer, you can rest assured that your genuine OEM parts are manufactured to meet original equipment criteria. Additionally, all Cat lift truck OEM parts come with a six-month, unlimited-hours warranty.

When speed is critical, our Parts Fast Or Parts Free Guarantee* ensures next-business-day delivery of all Cat lift trucks parts, or they're free, including freight. If your part doesn't come in by the next business day, we pay for it.

STANDING BEHIND OUR PRODUCTS

We deliver peace of mind by helping your lift trucks stay on the job. Every new Cat lift truck is covered by a 1-year / 2,000-hours warranty that includes parts and labor, as well as components and systems. With our standard 2-year / 4,000-hours extended powertrain warranty, you'll have the confidence that only comes from owning a Cat lift truck.

* At dealer's location.

† Programs may be subject to change without notice and may vary by region. Please ask your local Cat lift truck dealer for complete terms and conditions.

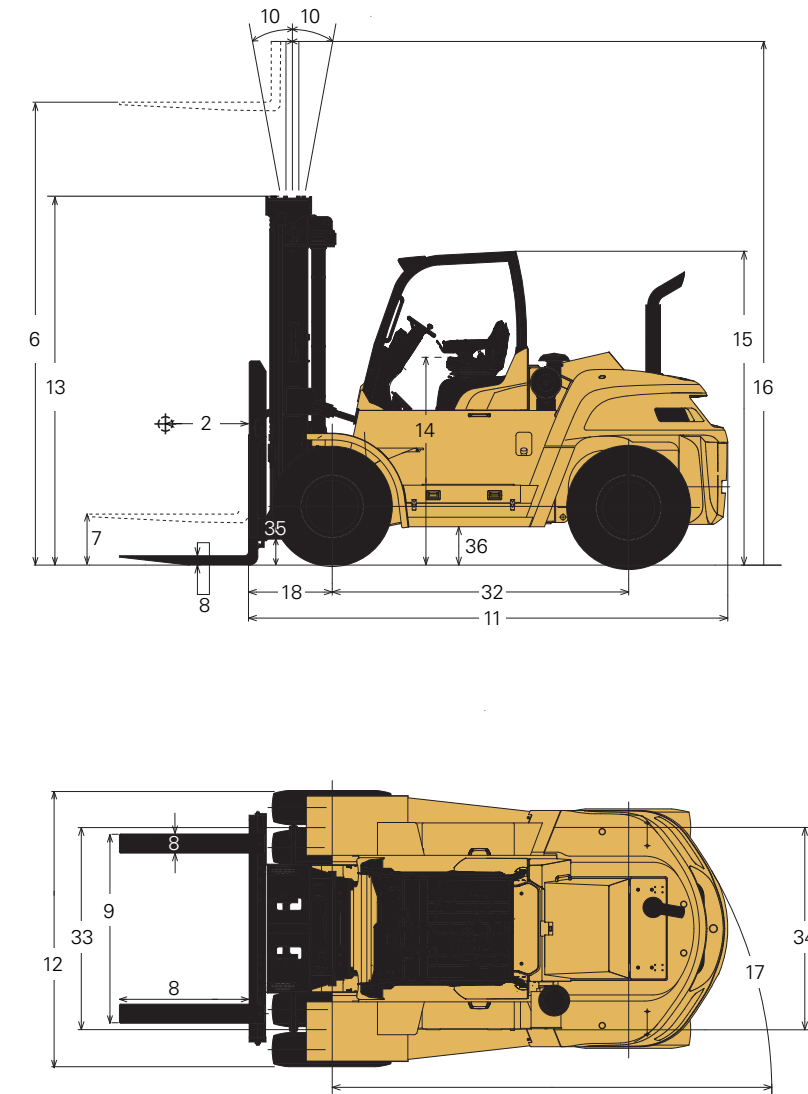
Specifications

Characteristics			DP100N		DP120N		DP135N		DP150N		DP160N	
1	Capacity at rated load center	lb kg	22,000	10,000	26,500	12,000	30,000	13,500	33,000	15,000	36,000	16,000
2	Capacity at load center – distance	in mm	24	600	24	600	24	600	24	600	24	600
3	Power – electric, diesel, gasoline or LP gas		diesel		diesel		diesel		diesel		diesel	
4	Tire type – cushion or pneumatic		pneumatic		pneumatic		pneumatic		pneumatic		pneumatic	
5	Wheels (x=driven) – number front / rear		4x / 2		4x / 2		4x / 2		4x / 2		4x / 2	
Dimensions			DP100N		DP120N		DP135N		DP150N		DP160N	
6	Maximum fork height (top of fork) ¹⁾	in mm	121	3,072	121	3,079	121.5	3,088	121.5	3,088	121.5	3,092
7	Free fork height ¹⁾	in mm	2.8	72	3.1	79	3.5	88	3.5	88	3.6	92
8	Forks – thickness x length x width ¹⁾	in mm	2.8 x 48.0 x 7.1	72 x 1,220 x 180	3.1 x 48.0 x 7.1	79 x 1,220 x 180	3.5 x 48.0 x 7.1	88 x 1,220 x 180	3.5 x 48.0 x 7.1	88 x 1,220 x 180	3.6 x 48.0 x 7.1	92 x 1,220 x 180
9	Fork spacing – out-to-out minimum / maximum	in mm	18.7 / 79.1	475 / 2,010	18.7 / 79.1	475 / 2,010	18.7 / 79.1	475 / 2,010	18.7 / 89.0	475 / 2,260	18.7 / 89.0	475 / 2,260
10	Tilt – forward / backward	deg	15° / 12°		15° / 12°		15° / 12°		15° / 12°		15° / 12°	
11	Length to fork face	in mm	170	4,310	173	4,390	179	4,535	191	4,840	199	5,055
12	Width – with dual drive tires	in mm	99	2,515	99	2,515	103	2,605	103	2,605	104	2,635
13	Height – with lowered mast ¹⁾	in mm	121.5	3,087	121.5	3,087	131.5	3,332	131.5	3,330	139	3,530
14	Seat height to SIP	in mm	75.4	1,915	75.4	1,915	77.2	1,960	77.2	1,960	77.2	1,960
15	Height – to top of overhead guard	in mm	119	3,015	119	3,020	121	3,060	121	3,060	121	3,060
16	Height – with extended mast ¹⁾	in mm	177	4,486	177	4,486	194	4,927	194	4,927	194	4,927
17	Minimum outside turning radius	in mm	157	4,000	160	4,060	164	4,160	179	4,550	190	4,815
18	Load moment constant	in mm	30.3	770	30.7	780	31.5	800	31.7	805	32.3	820
19	Minimum aisle – 90° stack – zero clearance without a load	in mm	188	4,770	191	4,840	195	4,960	211	5,355	222	5,635
Performance			DP100N		DP120N		DP135N		DP150N		DP160N	
20	Travel speed – loaded / empty	mph km/h	16.5 / 19.3	26.5 / 31.0	15.5 / 19.3	25.0 / 31.0	15.8 / 19.9	25.5 / 32.0	15.5 / 19.9	25.0 / 32.0	15.2 / 19.6	24.5 / 31.5
21	Lift speed – loaded / empty	fpm m/s	80.7 / 86.6	0.41 / 0.44	80.7 / 86.6	0.41 / 0.44	66.9 / 72.8	0.34 / 0.37	66.9 / 72.8	0.34 / 0.37	63.0 / 67.0	0.32 / 0.34
22	Lowering speed – loaded / empty	fpm m/s	88.6 / 92.5	0.45 / 0.47	88.6 / 92.5	0.45 / 0.47	88.6 / 94.5	0.45 / 0.48	88.6 / 94.5	0.45 / 0.48	80.7 / 86.6	0.41 / 0.44
23	Drawbar pull – loaded at 1 mph (1.6 km)	lb N	22,480	100,000	22,480	100,000	20,680	92,000	20,680	92,000	20,460	91,000
24	Drawbar pull – loaded maximum	lb N	24,050	107,000	27,200	121,000	24,730	110,000	24,730	110,000	24,500	109,000
25	Gradeability – loaded at 1 mph (1.6 km)	%	42.1		39.3		31.8		29.6		27.5	
26	Gradeability – maximum loaded	%	42.1		42.2		38.9		36.2		33.4	
Weight			DP100N		DP120N		DP135N		DP150N		DP160N	
27	Empty	lb kg	32,210	14,610	34,970	15,860	38,540	17,480	39,790	18,050	41,760	18,940
28	Axle load – with rated load front / rear	lb kg	48,870 / 5,420	22,150 / 2,460	55,450 / 6,020	25,130 / 2,730	61,815 / 6,725	27,940 / 3,040	66,330 / 6,600	30,055 / 2,995	70,985 / 6,775	31,895 / 3,045
29	Axle load – without load front / rear	lb kg	16,005 / 16,205	7,260 / 7,350	15,940 / 19,030	7,230 / 8,630	16,975 / 21,565	7,700 / 9,780	18,210 / 21,580	8,260 / 9,790	19,900 / 21,860	9,025 / 9,915
Chassis			DP100N		DP120N		DP135N		DP150N		DP160N	
30	Tire size – front, standard duals	in	10-20-14PR		10-20-16PR		12-20-18PR		12-20-18PR		12-20-20PR	
31	Tire size – rear tires	in	10-20-14PR		10-20-16PR		12-20-18PR		12-20-18PR		12-20-20PR	
32	Wheelbase	in mm	110	2,800	110	2,800	110	2,800	122	3,100	130	3,300
33	Tread width – front, standard duals	in mm	74.8	1,900	74.8	1,900	75.0	1,905	75.0	1,905	75.0	1,905
34	Tread width – rear tires	in mm	77.4	1,965	77.4	1,965	75.8	1,925	75.8	1,925	74.4	1,890
35	Ground clearance – at lowest point at mast	in mm	10.2	260	10.2	260	12.0	305	11.8	300	11.8	300
36	Ground clearance – at center of wheelbase	in mm	12.2	310	12.2	310	14.0	355	14.0	355	14.0	355
37	Service brake		air over hydraulic power brakes		air over hydraulic power brakes		air over hydraulic power brakes		air over hydraulic power brakes		wet disc brakes	
38	Parking brake		hand, mechanical		hand, mechanical		hand, mechanical		hand, mechanical		hand, mechanical	
Powertrain			DP100N		DP120N		DP135N		DP150N		DP160N	
39	Engine model		Perkins 1204E		Perkins 1204E		Perkins 1204E		Perkins 1204E		Perkins 1204E	
40	Engine – continuous output S.A.E. gross	HP kW	174	129	174	129	174	129	174	129	174	129
41		at rpm	2,200		2,220		2,200		2,200		2,200	
42	Engine – maximum torque S.A.E. gross	lb-ft N-m	553	750	553	750	553	750	553	750	553	750
43		at rpm	1,400		1,400		1,400		1,400		1,400	
44	Cylinder / displacement	cu in L	4 / 268.5	4 / 4.4	4 / 268.5	4 / 4.4	4 / 268.5	4 / 4.4	4 / 268.5	4 / 4.4	4 / 268.5	4 / 4.4
45	Transmission – type		powershift		powershift		powershift		powershift		powershift	
46	Transmission – number of speeds forward / reverse		3 / 3		3 / 3		3 / 3		3 / 3		3 / 3	
47	Battery	volts	24		24		24		24		24	
48	Relief pressure for attachments	psi bar	2,990	206	2,990	206	2,990	206	2,990	206	2,990	206
49	Noise level – mean value at operator's ear Leq	dB(A)	82.1		82.1		82.1		82.1		82.1	

1) Heights with listed forks on standard two-stage mast. Optional forks will change dimensions slightly.

NOTE: Dimensions represent maximum battery size, not compartment size. These specifications assume the use of drive axles, tires and tilt angles specified. Any modification to specifications, or any other combination of specifications made after the shipment of the truck, requires prior written approval from Mitsubishi Caterpillar Forklift America Inc. (MCFA). (See ANSI/ITSDF B56.1.) Also be advised that overall operating visibility may be affected by the mast configuration and mast options of your lift truck. Therefore, you may need to add ancillary [auxiliary] devices or modify your operating practices. Consult your dealer for further information.

DP100N-DP160N



Safety Standards

These trucks meet American National Standards Institute/ Industrial Truck Standards Development Foundation, ANSI/ITSDF B56.1. Users should be aware of, and adhere to, applicable codes and regulations regarding operator training, use, operation and maintenance of powered industrial trucks, including:

- ANSI/ITSDF B56.1.
- NFPA 505, fire safety standard for powered industrial trucks – type designations, areas of use, maintenance, and operation.
- Occupational Safety and Health Administration (OSHA) regulations that may apply.

Specifications, equipment, technical data, photos and illustrations based on information at time of printing and subject to change without notice. Some products may be shown with optional equipment.



Your Cat lift truck dealer can provide additional options and features to specialize your lift truck for your unique application. Operator training and custom financing programs are also available to help find the right fit for your business.

Helping move businesses forward – that's how we're built.

BUILT FOR IT.™

1-800-CAT-LIFT | www.cat-lift.com | m.cat-lift.com

© 2014 MCFA. All Rights Reserved. CAT, CATERPILLAR, BUILT FOR IT, their respective logos, "CaterpillarYellow," the "Power Edge" trade dress as well as corporate and product identity used herein, are trademarks of Caterpillar and may not be used without permission. All registered trademarks are the property of their respective owners. Some products may be shown with optional equipment.

CECV0024

04/14

CAT[®] Lift Trucks