

Powerful, low-maintenance  
AC drive motor

Proportional hydraulic controls allow  
for precision placement of loads

Lift heights up to 17 feet, with excellent  
residual capacities

Easily maneuvered in very tight spaces  
by operating with handle in vertical  
position and using the crawl-speed  
button



## **EJC B14-B16 / EJC 214-220**

### **Electric Walkie Fork-Over And Straddle Stackers (3,000; 4,400 lbs.)**

The electric walkie stackers feature high residual capacity and are designed for medium- to heavy-duty, multi-level stacking applications.

The strong, thick steel frame chassis and solid steel baselegs provide unmatched durability and strength for many years of dependable use. When combined with standard caster wheels, the well-engineered design ensures excellent stability and high residual lift capacities up to 206 inches.

Equipped with a powerful, 1.6 kW drive motor, the stacker can travel up to 3.7 mph even with a full load, while the impressive 3 kW hydraulic motor effortlessly lifts rated loads to their full lift heights.

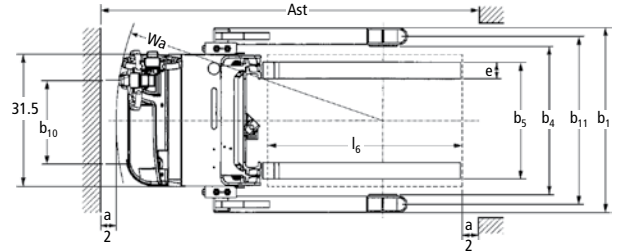
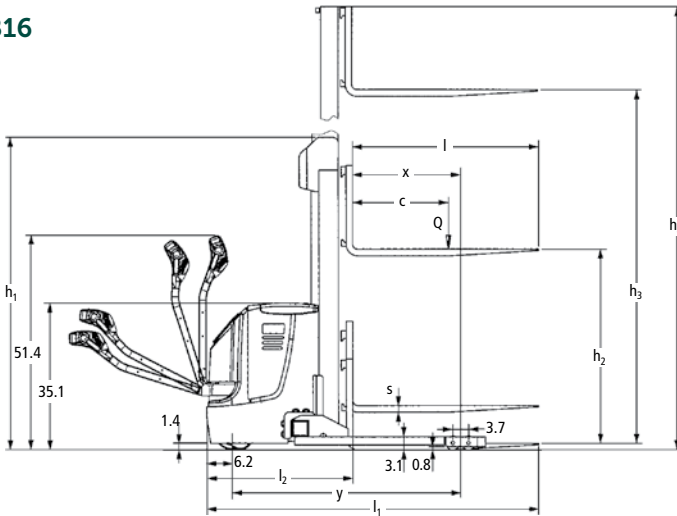
The long, low-mounted control handle maximizes the distance between the operator and the chassis, reducing the amount of effort to maneuver the truck. If space is at a premium, the standard crawl-speed button allows for maneuvering in tight areas with

the handle in the vertical position. The control handle is also side-mounted, providing improved visibility of the load from the operating position.

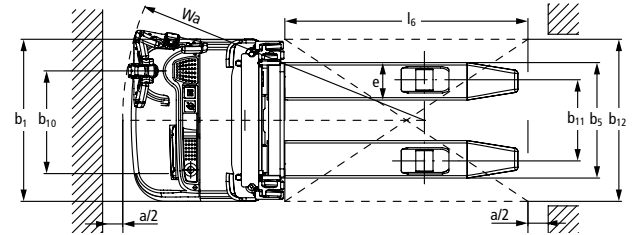
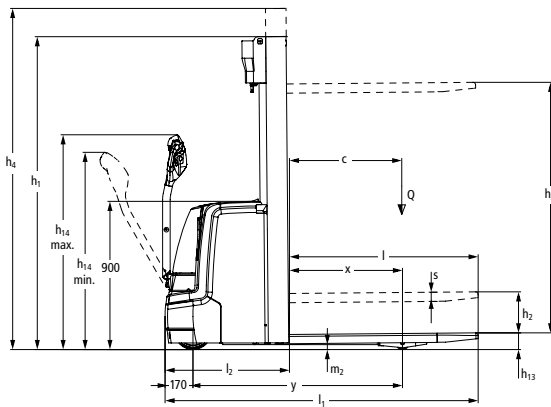
These walkie stackers are also equipped with proportional hydraulics as standard, allowing fragile goods to be precisely stacked and deposited gently on the floor or in racking. The operator can control all hydraulic functions with the multi-function control handle without having to reach to the chassis.

# EJC B14-B16 / EJC 214-220

## EJC B14-B16



## EJC 214-220



## Mast Tables

		EJC B14/EJC 214							EJC B16/EJC 216							EJC 220						
		Maximum Fork Height (MFH)		Overall Lowered Height (OAL)		Free-Lift <sup>1</sup>		Tilt	Maximum Fork Height (MFH)		Overall Lowered Height (OAL)		Free-Lift <sup>1</sup>		Tilt	Maximum Fork Height (MFH)		Overall Lowered Height (OAL)		Free-Lift <sup>1</sup>		Tilt
		in	mm	in	mm	in	mm	deg.	in	mm	in	mm	in	mm	deg.	in	mm	in	mm	in	mm	deg.
Simplex	101	2,570	69	1,750	4	100	0	97	2,470	69	1,750	4	100	0	98	2,489	77	1,956	4	100	0	
	109	2,770	73	1,850	4	100	0	105	2,670	73	1,850	4	100	0	110	2,794	83	2,108	4	100	0	
	117	2,970	77	1,950	4	100	0	113	2,870	77	1,950	4	100	0	127	3,226	97	2,464	4	100	0	
	128	3,270	83	2,100	4	100	0	124	3,170	83	2,100	4	100	0								
	144	3,670	91	2,300	4	100	0	140	3,570	91	2,300	4	100	0								
	164	4,170	101	2,550	4	100	0	152	3,870	97	2,450	4	100	0								
	172	4,370	105	2,650	4	100	0	160	4,070	101	2,550	4	100	0								
Duplex	101	2,570	67	1,700	19	482.6	0	97	2,470	67	1,700	44	482.6	0	98	2,489	75	1,900	48	1,219	0	
	117	2,970	75	1,900	27	685.8	0	113	2,870	75	1,900	52	685.8	0	110	2,794	81	2,050	54	1,372	0	
	128	3,270	81	2,050	33	838.2	0	124	3,170	81	2,050	58	838.2	0	137	3,480	95	2,413	68	1,727	0	
	144	3,670	89	2,250	41	1040	0	140	3,570	89	2,250	66	1040	0								
	164	4,170	99	2,500	51	1290	0	160	4,070	99	2,500	76	1290	0								
	172	4,370	103	2,600	55	1390	0	168	4,270	103	2,600	80	1390	0								
Triplex	163	4,160	72	1,830	24	609.6	0	159	4,060	72	1,830	50	609.6	0	138	3,505	73	1,850	45	1,143	2	
	172	4,370	75	1,900	27	685.8	0	168	4,270	75	1,900	52	685.8	0	165	4,191	82	2,083	54	1,372	3	
	187	4,760	80	2,030	32	812.8	0	183	4,660	80	2,030	57	812.8	0	189	4,801	90	2,286	62	1,575	4	
	213	5,420	89	2,250	41	1040	0	209	5,320	89	2,250	66	1040	0								

<sup>1</sup>Overall Extended (OAE) and Free-Lift heights include 48" load backrest.

1. For EJC 214 and EJC 216 chassis, please add 10" on duplex and triplex mast measurement.

# Technical Data

Characteristics	1.1	Manufacturer				Jungheinrich®	
	1.2	Model				<b>EJC B14</b>	
	1.3	Drive				electric	
	1.4	Type				walkie straddle stacker	
	1.5	Load capacity / rated load	Q	lbs	kg	3,000	1,400
	1.6	Load center distance	c	in	mm	24	600
	1.9	Wheelbase	y	in	mm	55.5	1,409
Weights	2.1	Service weight including battery (see line 6.5)		lbs	kg	2,527	1,146
	2.2	Axle loading – loaded, front / rear		lbs	kg	1,785 / 3,742	822 / 1,724
	2.3	Axle loading – unloaded, front / rear		lbs	kg	1,660 / 867	753 / 393
Wheels, Chassis	3.1	Tires					PU (polyurethane)
	3.2	Tire size, drive		in	mm	9.1 x 2.8	230 x 70
	3.3	Tire size, load		in	mm	3.3 x 3.0	85 x 75
		Tire size, caster		in	mm	4.9 x 2.4	140 x 57
	3.5	Wheels – number, drive / caster / load					1 / 1 / 4
Dimensions	4.2	Overall lowered height (OAL)	$h_1$	in	mm	77	1,950
	4.3	Free-lift	$h_2$	in	mm	4	100
	4.4	Maximum fork height (MFH)		in	mm	117	2,970
	4.5	Overall extended height (OAE)	$h_4$	in	mm	165	4,200
	4.9	Handle height in drive position, minimum / maximum	$h_{14}$	in	mm	33.5 / 51.4	850 / 1,305
	4.15	Lowered fork height	$h_{13}$	in	mm	2.75	70
		Overall length, to tip of baseleg		in	mm	75.2	1,910
	4.19	Overall length	$l_1$	in	mm	77.2 <sup>1)2)</sup>	2,060 <sup>1)2)</sup>
	4.20	Length to fork face, headlength	$l_2$	in	mm	35.8 <sup>1)</sup>	910 <sup>1)</sup>
		Overall baseleg width	$b_1$	in	mm	43.3 / 50 / 57.9	1,100 / 1,270 / 1,470
	4.22	Fork dimensions, thickness / width	s / e	in	mm	1.6 / 3.9	40 / 100
		Overall chassis width	$b_2$	in	mm	31.5	800
	4.25	Width across forks, minimum / maximum	$b_5$	in	mm	12.4 / 27.8	316 / 706
		Fork carriage width	$b_3$	in	mm	31.5	800
		Baseleg opening width (BLO)	$b_4$	in	mm	35.4 / 42.1 / 50	900 / 1,070 / 1,270
	4.31	Ground clearance, under mast (loaded)	$m_1$	in	mm	1.6	40
	4.32	Ground clearance, center of wheelbase	$m_2$	in	mm	2	50
4.33	Aisle width for right angle stack	Ast	in	mm			
4.35	Turning radius	Wa	in	mm	63.8	1,620	
Performance	5.1	Travel speed, loaded / unloaded		mph	km/h	3.7 / 3.7	6.0 / 6.0
	5.2	Lift speed, loaded / unloaded		ft / min	km/h	31.5 / 49.2	0.16 / 0.25
	5.3	Lowering speed, loaded / unloaded		ft / min	m / s	72.8 / 67	0.37 / 0.34
	5.7	Maximum gradeability, loaded / unloaded		%		8 / 16	
	5.10	Service brake					electro magnetic
Motors	6.1	Drive motor (rating S <sub>2</sub> 60 minutes)		hp / kW		2.1 / 1.6	
	6.2	Lift motor rating at S <sub>2</sub> 15%		hp / kW		4.0 / 3.0	
	6.4	Battery voltage, maximum capacity (at 6 hour rate)		V / Ah		24 / 375	
	6.5	Battery weight, minimum / maximum		lbs	kg	536 / 742	243 / 336

1) Using 77" OAL simplex mast, other masts may change value.

2) Using 41" long forks.

Jungheinrich®		Jungheinrich®		Jungheinrich®		Jungheinrich®	
EJC 214		EJC B16		EJC 216		EJC 220	
electric		electric		electric		electric	
walkie fork-over stacker		walkie straddle stacker		walkie fork-over stacker		walkie fork-over stacker	
3,000	1,400	3,500	1,600	3,500	1,600	4,400	2,000
24	600	24	600	24	600	24	600
50	1,277	55.5	1,409	50	1,277	53.4	1,357
2,390	1,084	2,527	1,146	2,400	1,089	2,400	1,089
1,755 / 3,635	809 / 1,675	1,817 / 4,210	828 / 1,918	1,920 / 3,980	810 / 1,679	1,920 / 3,980	810 / 1,679
1,659 / 731	752 / 332	1,660 / 867	753 / 393	1,667 / 734	756 / 333	1,667 / 734	756 / 333
PU (polyurethane)		PU (polyurethane)		PU (polyurethane)		PU (polyurethane)	
9.1 x 2.8	230 x 70	9.1 x 2.8	230 x 70	9.1 x 2.8	230 x 70	9.1 x 2.8	230 x 70
3.3 x 4.3	85 x 110	3.3 x 3.0	85 x 75	3.3 x 4.3	85 x 110	3.3 x 3.3	85 x 85
4.9 x 2.4	140 x 57	4.9 x 2.4	140 x 57	4.9 x 2.4	140 x 57	4.9 x 2.1	140 x 54
1 / 1 / 2		1 / 1 / 4		1 / 1 / 2		1 / 1 / 4	
77	1,950	77	1,950	77	1,950	82.7	2,100
4	100	4	100	4	100	4	100
117	2,970	113	2,870	113	2,870	113	2,870
156	3,965	162	4,100	153	3,890	153	3,890
33.5 / 51.4	850 / 1,305	33.5 / 51.4	850 / 1,305	33.5 / 51.4	850 / 1,305	33.5 / 51.4	850 / 1,305
3.55	90	2.75	70	3.55	90	3.55	90
N/A	N/A	75.2	1,910	N/A	N/A	N/A	N/A
75.1 <sup>1)</sup>	1,908 <sup>1)</sup>	77.2 <sup>1) 2)</sup>	2,060 <sup>1) 2)</sup>	75.1 <sup>1)</sup>	1,908 <sup>1)</sup>	78.27 <sup>1)</sup>	1,988 <sup>1)</sup>
29.9 <sup>1)</sup>	758 <sup>1)</sup>	35.8 <sup>1)</sup>	910 <sup>1)</sup>	29.9 <sup>1)</sup>	758 <sup>1)</sup>	33 <sup>1)</sup>	838 <sup>1)</sup>
N/A	N/A	43.3 / 50 / 57.9	1,100 / 1,270 / 1,470	N/A	N/A	N/A	N/A
2.2 / 7.3	56 / 185	1.6 / 3.9	40 / 100	2.2 / 7.3	56 / 185	2.6 / 7.7	61 / 195
31.5	800	31.5	800	31.5	800	32.3	820
22.5	570	12.4 / 27.8	316 / 706	22.5	570	22.5	570
N/A	N/A	31.5	800	N/A	N/A	N/A	N/A
7.9	200	35.4 / 42.1 / 50	900 / 1,070 / 1,270	7.9	200	N/A	N/A
1.4	30	1.6	40	1.4	30	N/A	N/A
1.4	30	2	50	1.4	30	0.79	20
Please contact your local Jungheinrich dealer for information							
59	1,488	63.8	1,620	59	1,488	61.7	1,568
3.7 / 3.7	6.0 / 6.0	3.7 / 3.7	6.0 / 6.0	3.7 / 3.7	6.0 / 6.0	3.3 / 3.4	5.3 / 5.4
31.5 / 49.2	0.16 / 0.25	29.5 / 49.2	0.15 / 0.25	31.5 / 49.2	0.16 / 0.25	19.7 / 35.4	0.10 / 0.18
72.8 / 67	0.37 / 0.34	72.8 / 67	0.37 / 0.34	72.8 / 67	0.37 / 0.34	72.8 / 67	0.37 / 0.34
8 / 16		7 / 16		7 / 16		5 / 16	
electro magnetic		electro magnetic		electro magnetic		electro magnetic	
2.1 / 1.6		2.1 / 1.6		2.1 / 1.6		2.1	1.6
4.0 / 3.0		4.0 / 3.0		4.0 / 3.0		4.0	3.0
24 / 375		24 / 375		24 / 375		24	375
536 / 742	243 / 336	536 / 742	243 / 336	536 / 742	243 / 336	536 / 635	243 / 288



**JUNGHEINRICH**  
EFC 216

**JUNGHEINRICH**

3101  
1308  
05/11

# The Jungheinrich Advantage

## Powerful operation and durable construction

The electric walkie stackers feature solid steel chassis components and powerful motors to provide years of dependable service.

- The powerful, 1.6 kW AC drive motor ensures the maximum speed of 3.7 mph is maintained, even with a full load.
- An impressive, 3 kW hydraulic motor provides fast lifting speeds of up to 31.5 ft./min. with a full load.
- Manufactured with a rugged chassis and a rigid mast, the forklift is well suited for the lifting of heavy loads and applications requiring high productivity.

## Stable and customizable

The EJC B14 – EJC B16 lift trucks are fitted with a Class 2 fork carriage and optional adjustable baselegs, allowing the forklift to be easily adapted to different loads and applications. This style of stacker is suited for straddling a pallet.

The EJC 214 – EJC 220 lift trucks are fitted with fixed forks resting over the baselegs, yielding a narrower, more maneuverable chassis. This style of stacker is suited for an open-bottom type pallet.

The electric walkie stackers also provide excellent travel stability due to the forklift's standard caster wheels, which maintain direct contact with the floor at all times.

## Long operating times

- The large battery compartment accepts 24 volt industrial batteries up to 400 Ah.
- Battery changing is carried out through overhead battery extraction.

## Convenient storage areas

- Pen tray, cup holder and clipboard are incorporated into the top of the chassis.

## Secure, ergonomic operation

Operator security and ergonomic control features were of vital importance to the design process.

- All operating functions, including carriage lift and lower activation, are controlled through the multifunction control handle without having to reach to the chassis. As a result, the operator can fully concentrate on the stacking and retrieval of pallets.
- Precise lifting and lowering of fragile loads is achieved through proportional hydraulics.
- Long, low-mounted handle design keeps the operator a secure distance from the lift truck during normal operation and provides additional leverage for ease of steering.
- Crawl-speed button allows for forklift operation with the handle in the vertical position at a reduced speed, increasing the truck's ability to maneuver in restrictive space applications.
- Low operating noise.
- The standard load backrest helps prevent loose loads from falling toward the operator.
- Large, red emergency cut-off switch enables quick, intuitive shut down of the forklift in case of emergency.

## Controlled travel

The Jungheinrich electronic impulse control (SpeedControl) facilitates smooth travel with adjustments for virtually every application.

- Desired travel speed is maintained in every situation, even on ramps and inclines.
- The forklift's maximum programmed travel speed (up to 3.7 mph) is possible when travelling with or without a load.
- Individually-adjustable travel parameters (acceleration, minimum/maximum speed) ensure optimum adjustment to virtually every application.



Load bearing caster wheel provides excellent stability on flat or uneven floors.

## Available options

- Two- and three-stage masts with lift heights up to 206 inches.
- Cold storage package for refrigeration and freezer applications.
- Keyless PIN code input for secure truck activation (CanCode).
- Battery discharge indicator with hour meter and service code display (CanDis).

Built in compliance with ANSI/ITSDF B56.1 design specifications for Type E industrial trucks with Type E battery.

## Parts when you need them

Jungheinrich's Parts Fast or Parts Free Guarantee ensures next-business-day delivery by 5:00 p.m. of all Jungheinrich parts in the United States, or they're free, including freight. For customers in Canada and Mexico, the guarantee ensures shipping of parts within 24 hours from the time the order was placed by the dealer. See your local Jungheinrich dealer for program details.

\* Programs may be subject to change without notice and may vary by region. Please ask your local Jungheinrich dealer for complete terms and conditions.

